

Villa in La Cala Golf

Reference: R3784951



PLOT:1 - 1532 sq meters  
COORD: 36.530480, -4.721203

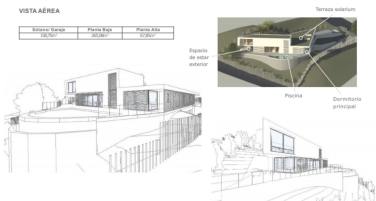
Bedrooms: 3	Bathrooms: 3	M²: 490	Price: 990,000 €
Status: Sale	Property Type: Villa	Parking places: by request	Printing day : 10th August 2025



**GARAJE**  
Desde una rampa accedemos a un garaje amplio con acceso a la vivienda.  
1. Garaje  
2. Almacén de jardinería  
3. Cuarto de instalaciones  
4. Depósito de agua  
5. Vestibulo y ropero  
6. Alcorchador



**PLANTA PRINCIPAL**  
En esta planta encontramos un dormitorio principal y un espacio de estar con impresionantes vistas.  
1. Alcorchador  
2. Espacio de estar biblioteca  
3. Terraza solarium



Área	Superficie	Superficie
Área solarium	120,00 m²	120,00 m²
Área de estar	120,00 m²	120,00 m²

Overview: SUSTAINABLE AND ECOLOGICAL VILLA, DESIGN OF BASS HOUSES, WITH COMPLETELY ECOLOGICAL MATERIALS (LOW CARBON FOOTPRINT, WITHOUT CHEMICALS, RENEWABLES, RECYCLABLE, REHUTILIZABLE, ADAPTING TO THE ENVIRONMENT, TAKING INTO ACCOUNT THE POSITION, THE INCIDENCE OF THE SUN. VENTILATION SYSTEM, DOUBLE FLOW. WITH OPTIMAL OXYGEN LEVELS, NO NEED TO OPEN WINDOWS. CONSTRUCTION SYSTEM, WHICH OPTIMIZES HUMAN CONSTRUCTION TIME, AS WELL AS CONSTRUCTION TIME. COMBINING BIOCOMPATIBLE MATERIALS. CORK-FIBER (PURE INSULATOR) WITH THERMAL INERTIA OF LAMADERA. FULLY BREATHABLE) AND CO2 FIXER CAL AND ANTIFUNGICIDA. OUR VILLA IS LOCATED IN THE RESERVE, EXCLUSIVE LUXURY AREA, SURROUNDED BY GOLF COURSES, MORE THAN 18 HOLES. PANORAMIC VIEWS. 490 M2 BUILT, ON A PLOT OF 1532 M2. 2 FLOORS AND GARAGE MAIN FLOOR: 1. ELEVATOR. 2. LIBRARY 3. SOLARIUM TERRACE GROUND FLOOR: WHERE IT DEVELOPS ALL THE LIFE OF THE HOUSE, EXTERIOR ROOMS, LIVING AREA AND MASTER BEDROOM HAVE DIRECT ACCESS TO LARGE TERRACE THAT TAKES US TO THE POOL 1. VESTIBULE AND LADDER 2. TOILET 3. ELEVATOR 4 KITCHEN 5 DINING LIVING ROOM 6 POOL 7. OUTDOOR LIVING ROOM 8. MASTER BEDROOM 9. MASTER BEDROOM BATHROOM 10. BEDROOM 2 11. BEDROOM 3 12. SHARED BATHROOM 13. LAVANDERIA Garage 1. GARAGE 2. STORE GARDENERIA 3. FACILITY ROOM 4. DEPURADORA 5. VESTIBULE AND ROPERO 6. ELEVATOR LOCATED 8 MINUTES FROM THE HIGHWAY, CLOSE TO SCHOOLS, LARGE COMMERCIAL AREAS, SCHOOLS, FANTASTIC BEACHES OF THE COSTA DEL SOL.

---

Features:

Sea views, Mountain views, Private garden, Pool, Lift, Parking, Luxury