

Terraced Townhouse in La Quinta

Reference: R3842479



Bedrooms: 5

Bathrooms: by request

M²: 284

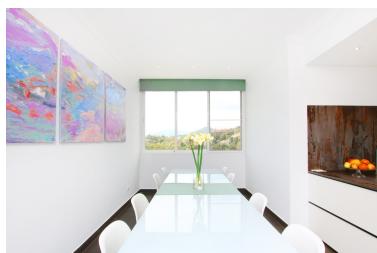
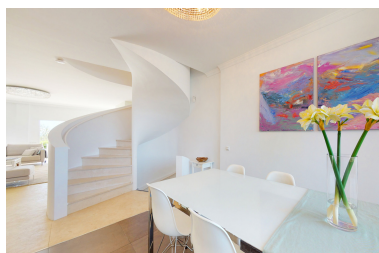
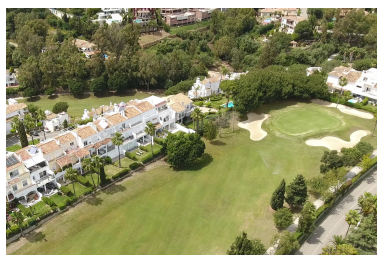
Price: 899,000 €

Status: Sale

Property Type: Terraced
Townhouse

Parking places: by request

Printing day : 13th August
2025



Overview: This massive townhouse sits in an enviable position in La Quinta Golf & Country Club; close to the hotel and clubhouse with panoramic sea and mountain views both towards La Concha and Marbella and towards the Sierra Blanca mountain range, Gibraltar and the African coastline. With nearly 300m² internal space, it is the largest type of townhouse in the area and all rooms have generous proportions. You enter the property at the lower ground level where there is a garage for 3 cars and space to park two more on the driveway. The entrance is an area to take off and store shoes, with a solid spiral staircase up to the ground floor level. The ground floor level is open plan with a designer kitchen, dining area with table for 8 people, and a very large living area. There is also a guest WC and a utility room off the kitchen. From the dining room window you have golf course and mountain views. The living room leads on to a covered patio then uncovered patio and then lawned garden meaning residents can have as much sun or shade as they wish. The garden backs directly on to the golf course and has golf, sea and La Concha views. The patios have plenty of space for outdoor furniture and dining. The garden is private but maintained by the community's gardeners so the property can be locked up and left. On the first floor are 4 double bedrooms. The first bedroom is en-suite with a full bathroom and, currently the other three bedrooms share a family bathroom. However, the second bedroom is massive and there is plenty of space to add another en-suite bathroom in this room. This would back onto the current family bathroom so this would be an easy addition to make. The first and second bedrooms on this floor both lead on to a large balcony with panoramic sea, mountain, golf and La Concha views. The third and fourth bedrooms just have windows and are safe for small children. On the second floor is the master bedroom suite with a walk-in wardrobe, full en-suite bathroom with both a bath and walk-in shower, and a large private balcony with stunning panoramic views. Also on this floor is a west facing sky bar which enjoys spectacular sunsets which silhouette the mountain range, Gibraltar and the African coastline. At the other end of the terrace of houses is a large communal pool and gardens. This is gated and solely for the use of the 13 homes in the community. The pool area is open year round. The Westin hotel and La Quinta Golf clubhouse are both just 5 minutes walk away so there are several bars and restaurants within walking distance. It is a similar distance to walk to the La Quinta Gourmet shop where you can buy basics or have a coffee. The new large Mercadona supermarket is 5 minutes drive away. It is also just 5 minutes drive to the Monte Halcones commercial strip with its popular restaurant and bars. In 10 minutes you can be in Puerto Banus marina, on the beach or shopping in San Pedro de Alcantara. Both Aloha and Atalaya schools are also reachable in 10 minutes. Located near the junction for the AP7 motorway, both Malaga airport and Gibraltar can be reached in 45 minutes. Despite being so close to Puerto Banus and being surrounded by amenities, the location is very tranquil and therefore offers the best of both worlds. It is a truly great family home in an equally great location. A virtual tour and arial drone video are available on request.

Features:

None, Pool, Air conditioning, Heating, Sea views, Mountain views, Private garden, None, Alarm system, Parking, Holiday Home, Luxury, Resale