

Commercial in Benahavís

Reference: R3931945



Bedrooms: by request

Bathrooms: by request

M²: 8,801

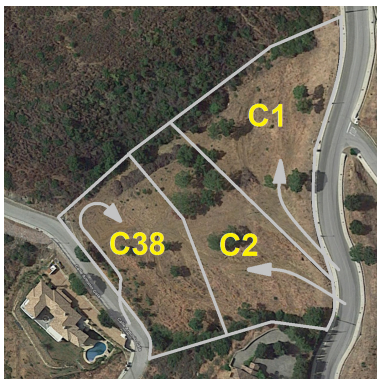
Price: 1,250,000 €

Status: Sale

Property Type: Commercial

Parking places: by request

Printing day : 28th
September 2024



Overview: MAGNIFICENT LAND of 8,801m² with a buildable area of 1074m². Located in the BENAHAVIS area, in the prestigious MONTEMAYOR urbanization, facing south west, with panoramic mountain views. Only 20 minutes by car from magnificent beaches. and the attractive Puerto Banús where you will find all kinds of services and leisure areas. Located in an urbanization with all supplies and building permits. This luxury area offers different golf courses in a few minutes driving. EXCELLENT OPPORTUNITY! Must be seen! the land consists of 3 plots with the possibility of building 3 villas, 3 projects have been studied, as well as topographic studies. 3 x Work licenses + Topographic survey + 3 x Geotechnical surveys and 1 x Complete slope

Features:

None, Sea views, Mountain views, Resale