

Villa in Atalaya

Reference: R3982072



Bedrooms: 3

Bathrooms: 2

M²: 136

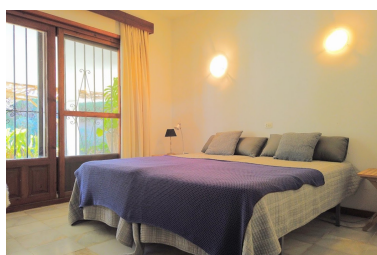
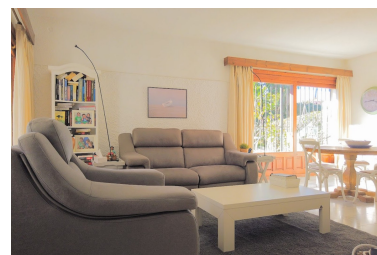
Price: 875,000 €

Status: Sale

Property Type: Villa

Parking places: by request

Printing day : 14th March
2025



Overview: This charming villa is located in the sought after and tranquil residential area of Atalaya - Isdabe, situated 200 meters from the beach and close to all local amenities such as supermarket, schools, pharmacy, golf clubs and several restaurants. This neighbourhood allows an easy access to Puerto Banus, Marbella or Estepona. All within 15 minutes drive. The villa consists of one floor with several terraces surrounding the property. There is a voluminous living room, kitchen and three spacious double bedrooms. The house has 2 bathrooms and 2 outdoor showers. A large garden with a swimming pool and beautiful vegetation that gives privacy and a sense of tranquillity.

Features:

None, Pool, Private garden, None, Parking, Beachfront, Holiday Home, Investment, Resale