

Villa in Atalaya

Reference: R4016500



Bedrooms: 4

Bathrooms: by request

M²: 480

Price: 0 €

Rent: 0 € / Month

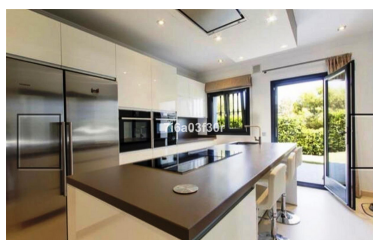
Short Rent:
from 6,000 to 7,500 € /
Week

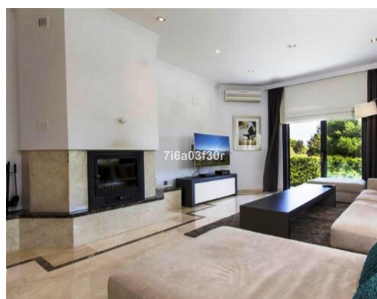
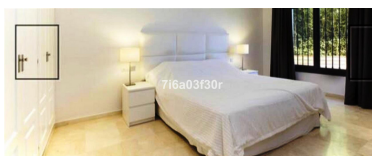
Status: Rent, Vacational

Property Type: Villa

Parking places: by request

Printing day : 17th July 2025





Overview:Modern villa in Atalaya Golf Available only July and August Prices for 6 nights, 7 days! Modern villa, on the first line of Golf with 4 bedrooms, 3 of the rooms are with private bathroom, Gym, security system, views of the Golf, totally private, without noise and traffic. The villa is very bright, with large windows, fireplace, A/C.

Urbanization: A new development of luxury modern open plan living apartments and penthouses in the most sought after area between Marbella and Estepona, the New Golden Mile. The urbanization finds itself in one of the most exclusive settings, surrounded by nature and close to all sort of amenities, services, restaurants, beaches, golf courses, schools, etc. An idyllic place to breathe pure air and tranquility while enjoying the countryside charm without renouncing to the luxury and services offered by the Costa del Sol. Located in a well-established area of Estepona near Benahavis, home to more exclusive property developments and a growing number of new villas. The project sits alongside the grounds of Atalaya Golf and Country Club, close to the sea and surrounded by golf. With modern architecture and exclusive materials this development has it all! Surrounded by Golf and greenery next to Atalaya Golf and Country Club, with two of the oldest 18 hole golf courses on the Costa del Sol. For Golf lovers this area is paradise with so many nice golf clubs nearby. A few to mention: Atalaya Golf and Country Club, Guadalmina Golf, El Paraiso Golf, Marbella Club Golf Resort, Los Arqueros Golf and Country Club, El Higueral Golf, Los Flamings Golf and many more..

Area: Located on the road to Benahavis and is strategically located just beside the spectacular golf course Atalaya Golf and Country Club. The complex is only two kilometre to the beach and a 2 minutes' drive to the motorway with easy access to the toll road which brings you to Malaga international airport within 40 minutes. The famous Puerto Banus and Marbella is just 7 minutes' drive away. Nearby amenities include the new Bilingual School Atalaya which is just two minutes' walk away, as well as a leading supermarket. A short drive towards the mountains is the 'Old town of Benahavis', a typical Andalucian village which is known for its gastronomy and referred to as the kitchen of the Costa del Sol. For a morning coffee or healthy lunch at Pane e chocolate or delicious Spanish tapas at the Asador. Or for daily local shopping there is Guadalmina shopping center with great shops and restaurants just 3 minutes from your home. More a sports fanatic? You can cycle in the mountains or along the San Pedro Boulevard, play Golf or hike in the gorge...

Features:

None, Pool, Air conditioning, Heating, Private garden, None, Alarm system, Parking, Holiday Home