

Commercial in Benahavís

Reference: R4028470



Bedrooms: by request

Bathrooms: by request

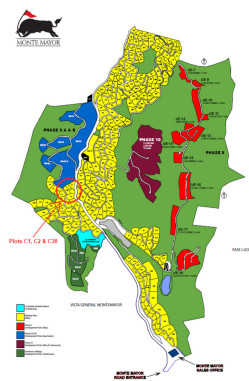
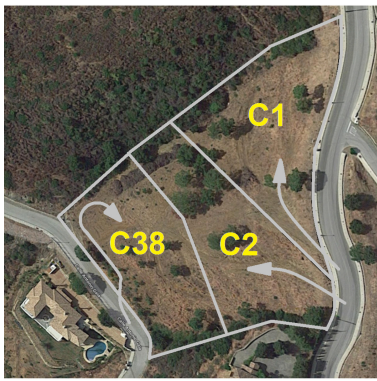
M²: 2,732

Price: 480,000 €

Status: Sale

Property Type: Commercial Parking places: by request

Printing day : 5th August
2025



Overview: The best Southwest facing plots in Monte Mayor with outstanding views. All 3 plots come with a building license and project. Each plot can be bought individually or all 3 plots can be bought together and be merged in to one huge plot. C1 : €480,000 (2,732 m²) C2: €350,000 (2,523 m²) C38 : €470,000 (2,930 m²) All 3 plots together : €1,275,000

Features:

Sea views, Mountain views, Investment