

Penthouse in Benalmadena Costa

Reference: R4059427



Bedrooms: 2

Bathrooms: 2

M²: 116

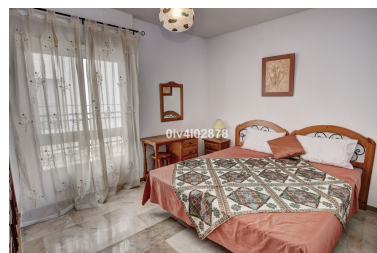
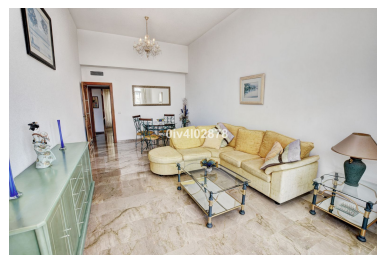
Price: 279,000 €

Status: Sale

Property Type: Penthouse

Parking places: by request

Printing day : 15th
September 2025



Overview: Spacious 2 bed 2 bath penthouse apartment with sea view terrace located close to Puertomarina in the relatively new complex of Don Joaquin. All rooms spacious throughout, with both bedrooms having ensuite bathrooms. Views from terrace are onto pool and garden and also benefit with partial sea views. Great location, spacious property, underground private parking and well run community with gardens and pool make this property one to add to your viewing list!! DEED: Total Built Area 116,11m2 including participation in community elements, Year of Build: 2002, Approx fees IBI :950€ per year - Basura 172€ per year - Community 90€ per month CEE: Energy Consumption Rating & CO2 Emissions Rating Pending The stated data is merely informative and has no contractual value. These details may be subject to errors, price changes, omissions, availability and/or withdrawal from the market without prior notice. The indicated price does not include the expenses inherent to the purchase of real estate according to current laws (ITP or VAT, notary expenses, registry expenses, conveyancing etc)

Features:

None, Pool, Sea views, Mountain views, Private garden, Lift, None, Parking, Resale