

Penthouse in Nueva Andalucía

Reference: R4064065



Bedrooms: 2

Bathrooms: 2

M²: 90

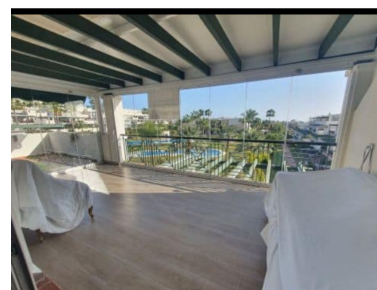
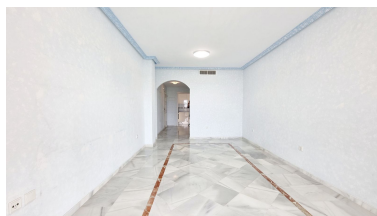
Price: 320,000 €

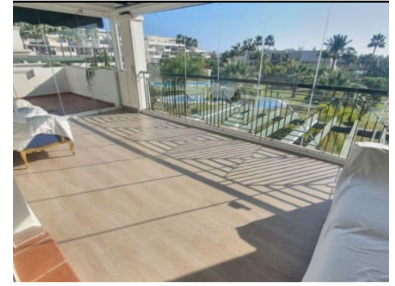
Status: Sale

Property Type: Penthouse

Parking places: by request

Printing day : 18th August
2025





Overview:Nueva Andalucia / Puerto Banus Near Puerto Banus, Very nice, south facing, corner apartment in the popular community of Lorcrimar.V, This apartment is orientated to the south and enjoys, thus is sunny all day long, from its large L-shaped terrace you will enjoy very nice views to the lovely mature gardens and swimming pools. The apartment is spacious and bright, it has large fully fitted kitchen with laundry room and direct access to the terrace., 2 bedrooms and 2 bathrooms. The development is well known for its large open terraces, The location of Lorcrimar is unbeatable, easy walking distance to the beach, to Puerto Banus and to San Pedro. leaving all the amenities at your doorstep. The Real Club de Padel with its famous outdoor gym and a top class tennis club are just around the corner, minimarket 20 meters away. This apartment has a private parking space and lift access

Features:

None, Pool, Air conditioning, Heating, Private garden, Lift, None, Parking, Resale