

Commercial in Mijas Costa

Reference: R4087684



Bedrooms: by request

Bathrooms: by request

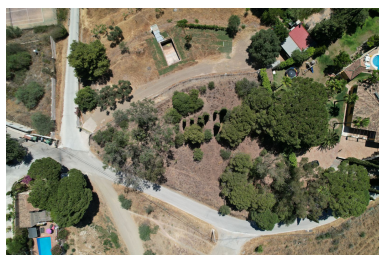
M²: 2,032

Price: 245,000 €

Status: Sale

Property Type: Commercial Parking places: by request

Printing day : 26th August
2025



Overview: Located near the Lew Hoad Tennis and Paddle Club, in a privileged location, with good access to the highway. Perfect to build two semi-detached houses or a villa with great detail. Quiet area with excellent views. "According to decree of the Junta de Andalucía 218-2005 of October 11, it is reported that notary, registry and ITP expenses are not included in the price"

Features:

Sea views, Mountain views